

Extol™ ISDN Card

Ideal for such applications as Internet access, small office/home office (SOHO), and telecommuting, the Extol ISDN communications card is a PC-based card that provides secure high-speed Basic Rate ISDN access for PC to LAN, LAN to Host, and PC to Host connections.

An ISDN line allows data, voice, facsimile, graphics, and video transmission in digital format.

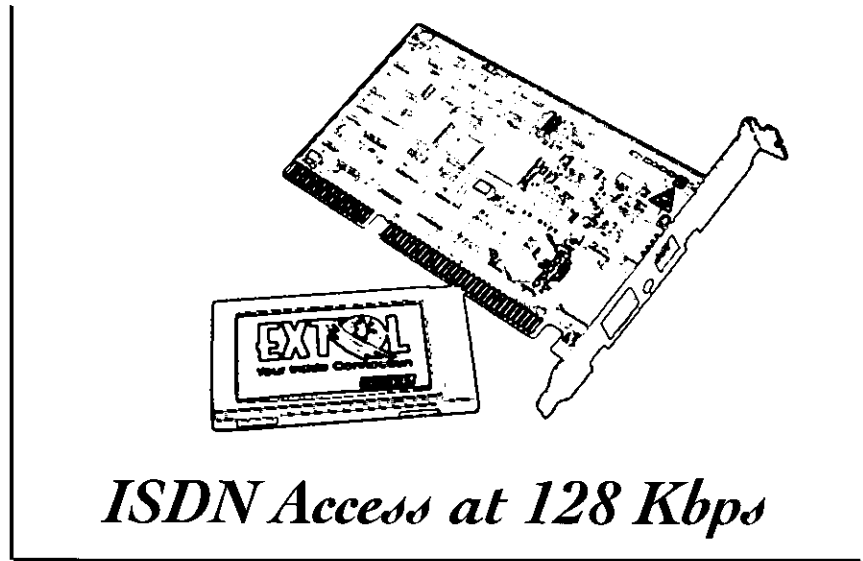
Communications over the public network is easy and straightforward with the Extol ISDN card. It offers outstanding price/performance by maximizing the Basic Rate ISDN benefits of error-free transmission with channel aggregation, compression and fast connect time.

Supports Windows™ Applications

Available in either an ISA-bus compatible or PCMCIA version, the Extol ISDN card is designed for PCs running Windows operating systems. The card allows you access to remote information by supporting the full range of protocols built into Dial-Up Networking, including IPX (for Novell's NetWare® connectivity), TCP/IP, NetBEUI, and PPP. Using Microsoft Dial-Up Networking, you can perform call management, optimize line use, and minimize line costs.

Internet Ready

Configuration options are presented in an easy-to-understand, intuitive manner, with online Help available. The Extol ISDN card is supplied as an "Internet Ready" product which can be installed without the need for technical expertise.



Fast Connections; 128Kbps Throughput

The Extol ISDN card exploits two powerful features of ISDN. First, the connection times are typically less than 3 seconds. Second, the Extol ISDN card aggregates the user data using Multi-Link PPP (ML/PPP). This enables both B channels to be used simultaneously, for a total of 128 Kbps throughput.

Extensive Built-In Diagnostics

The Extol ISDN card provides a comprehensive self-test utility that allows you to verify the operation of the product and ISDN line prior to accessing an application.

The Extol ISDN card includes "line in use" status icons and an extensive line monitor function that captures and displays all of the data transmission taking place. The line monitor function provides you with much of the same functionality of an expensive protocol analyzer, including data traffic display and significant event logging.

Reduce Usage Charges

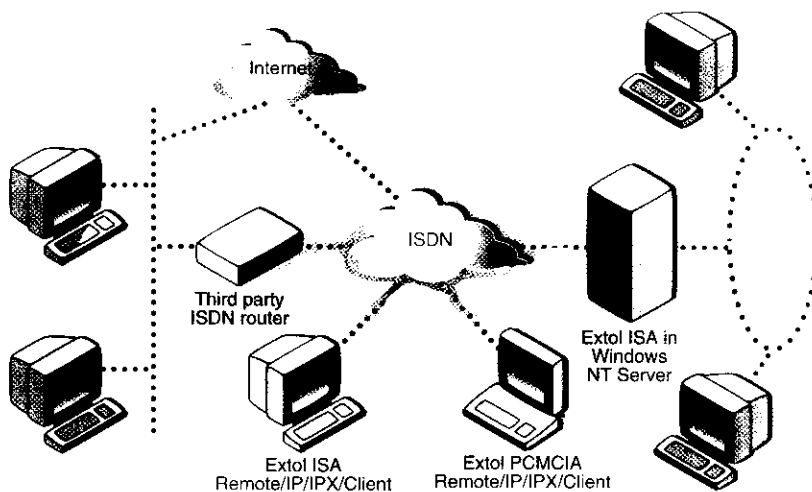
With the call filtering feature, you can save on toll charges by configuring the Extol ISDN Card to answer only calls that originate from sources you choose.

Similarly, the Extol ISDN card provides an idle line disconnect feature that allows idle calls to be dropped automatically following a specified period of inactivity.

SNMP Allows Remote Diagnosis

Configure and monitor the Extol ISDN card remotely using Simple Management Network Protocol (SNMP). You can also use SNMP for quick diagnosis and resolution of network problems.

- 128 Kbps ISDN Access via Multi-Link PPP
- Supports Windows 95®, and Windows NT™, and Windows for Workgroups™
- Internet Ready
- CAPI 2.0 compliance
- Async to Sync PPP conversion
- COM Port Emulation Mode
- Call Filtering and Idle Line Disconnect
- SNMP Support
- BACP Support
- ISA or PCMCIA versions
- U or S/T interface



Extol ISDN Cards Allow Fast ISDN Access

Extol ISDN Card

CAPI Support

When installed in PCs running Windows 95, the Extol ISDN card can be used with application suites compliant with Common Application Programming Interface (CAPI) for features such as fax, telephone answering machine, and Eurofile Transfer support.

BACP Support

Save money by controlling the number of active channels with Bandwidth Allocation Control Protocol (BACP) support. With BACP, the Extol ISDN card adds B channels to a connection only when traffic density warrants the high throughput, thereby keeping usage charges to a minimum.

COM Port Emulation Mode

This mode allows third-party applications that might not support the CAPI or TAPI interface to access the Extol ISDN card as if it was an external ISDN terminal adapter (ISDN modem).

technical specifications

| | |
|-----------------------------|---|
| Bus Compatibility | ISA or PCMCIA Type 2 |
| Configuration | PCMCIA: Plug and Play ISA: Switch configurable I/O, Software IRQ |
| ISDN Interface | Basic Rate ISDN with S/T or U interface |
| Data Rates | 128 Kbps (multi-link PPP) 64 Kbps (single channel) |
| Software Interfaces | Windows Telephony API (TAPI) CAPI 2.0 (Windows 95 only) NDIS WAN 3.1 COM Port Emulation |
| B-Channel Protocols | V.120, X.75, T.70NL, T.90NL, Async-sync PPP (RFC 1662), ML/PPP, PPP-MP (RFC 1990) |
| D-Channel Protocols | 5ESS, DMS-100, EWSD, NI-1, NET3 |
| Additional Features | Line monitor application Line status indicator Significant event logging Self-test utility |
| Network Management | SNMP |
| Supported Operating Systems | Windows 95, Windows NT, Windows for Workgroups (features vary with operating system) |
| Workstation Requirements | 80486 DX50 or higher |
| Agency Approvals | FCC Part 15, Class B, FCC Part 68, UL 1950, CSA950, CISPR22, Class B, Industry Canada CS-03, EN 55022 Class B, EN 50082-1, and IEC 801-2/5. |

Our policy of continuous development may cause the information and specifications contained herein to change without notice.

Racal, Racal-Datacom, and Extol are trademarks of Racal Electronics Plc. Microsoft and Windows 95 are registered trademarks and Windows is a trademark of Microsoft Corporation. All other logos and product names are trademarks or registered trademarks of their respective companies.

©1997 Racal-Datacom, Inc. All rights reserved. Printed in U.S.A.

3C1543 2/97 - 1142

Racal Data Group Access to multimedia information networks

RACAL

Internet: <http://www.racal.com/rdg>
US: 1-800-RACAL-55
US/Canada/S. America: 1-512-434-1517
United Kingdom: 44-1256-763911
Germany: 49-6102-2020
Singapore/SE Asia: 65-779-2200

France: 33-1-4933-5800
Italy: 39-331-426-111
Netherlands: 31-15-269-8282
Hong Kong: 852-2815-8633

China: 86-10-6500-7460
Belgium: 32-2-725-3450
Australia: 61-2-9936-7000
Japan: 81-3-5322-2965

